

DOCK LEVELERS

DOCK LEVELERS TECHNICAL FEATURES

- Capability to bridge wide range of vehicle heights
- Perfect leveling adjustment
- Loading weight up to 5 ton
- Surface of the bridge is painted with epoxy primer and paint, as well as sand-blasted beforehand, according to the Swedish specifications, SIS-SA 2 1/2 -3



DOCK LEVELERS HYDRAULIC ELECTRIC MOTOR POWERED

- Easy to operate through a control panel
- Hydraulic safety system for the unintended drop of the bridge

DOCK LEVELERS MECHANICAL FOR RAMP EDGE

- Easy to operate through use of spring loaded type mechanism.
- Safety system for the unintended drop of the bridge
- Capability to travel along the ramp



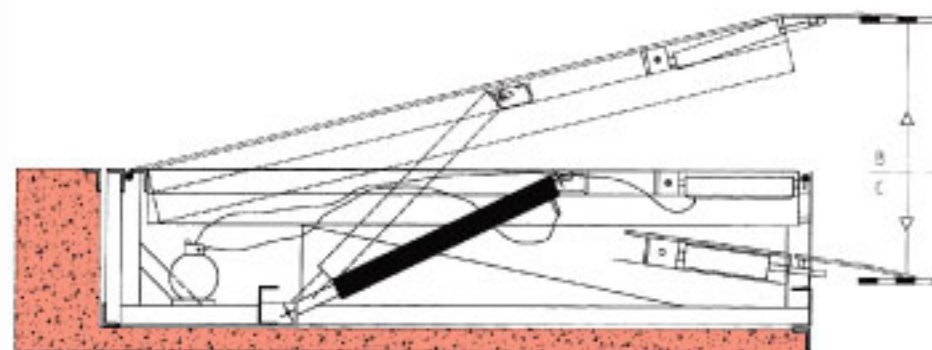
DOCK LEVELERS

- Time saving
- Reduced operating cost
- Safety for staff and goods

HYDRAULIC ELECTRIC MOTOR POWERED

D	HB	L/W
0.6	HB	20/18
0.6	HB	20/20
0.6	HB	20/22
0.6	HB	25/18
0.6	HB	25/20
0.6	HB	25/22
0.6	HB	30/18
0.6	HB	30/20
0.6	HB	30/22

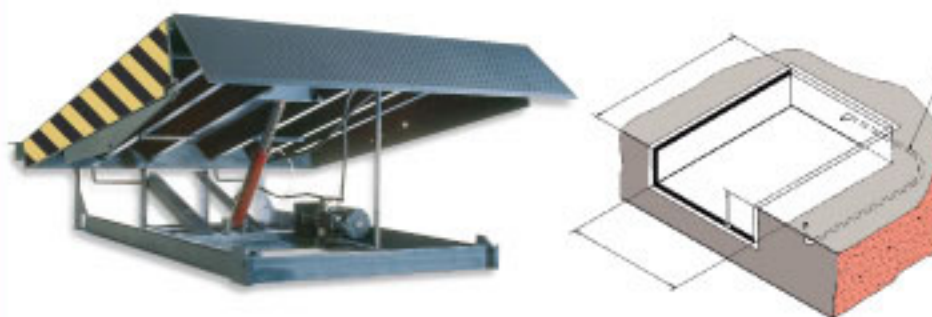
D: Depth H: Hydraulic B: Built-in L: Length W: Width



MECHANICAL FOR RAMP EDGE

L	S RE	RW
1.40	S RE	180
1.40	S RE	180 T
1.40	S RE	215
1.40	S RE	215 T
1.65	S RE	180
1.65	S RE	180 T
1.65	S RE	215
1.65	S RE	215 T

L: Span Length S: Spring loaded RE: for Ramp Edge RW: Ramp Width T: Traveling along the ramp



INDUSTRIAL AREA OF LARISSA 15 km Larissa – Thessaloniki Road
P.O.Box:1421 Tel.: +30 2410 54 10 11 Fax: +30 2410 54 10 16
e-mail: sales@dssteel.gr

ATHENS OFFICE Kimis Ave. & Electra 6 151 22 Marousi
Tel.: +30 210 28 28 080 Fax: +30 210 28 28 664
e-mail: athens@dssteel.gr

www.dssteel.gr

Dealer

